



SPORT FISHING

MASTER THE CATCH

Sport fishing products recognized worldwide for durability, simplicity and angler-friendly features - leading the way in innovation and performance.

GRAND SLAM 300

SINGLE HANDLE OPERATION

Introducing the Grand Slam 300 – a stainless-steel / polished, anodized aluminum, single-handle Outrigger Mount that delivers enhanced safety and performance with smooth, one-handed operation from the deck. Easily adjust rotation and lift of outrigger poles using the GS-300's ergonomic crank handle, which locks flush into the base. The Mount's attractive, all-metal design means no plastic components, a greater water seal and increased protection from the elements. The GS-300 pairs with TACO's NEW Internally Rigged/Collapsible Outriggers, as well as Aluminum or Carbon Fiber Tele-Outrigger Poles up to 20' with an underside pin-locking connection – eliminating the need for port and starboard designations.



PIN-LOCKING ARM

- No port or starboard designation
- Underside locking pin connection
- Arm lifts up to 49° from horizontal position for kite fishing and dock clearance
- Pairs with 1-1/2" DIA Outrigger Poles up to 20'
- Can be used with Outrigger Base Reducer for 1-1/8" DIA poles

HANDLE

- Stainless-steel, ergonomic, single-hand crank handle with ball bearing
- Enables lift and rotation of outrigger poles from safety of the deck
- Unique, locking flip handle
 - Keeps the handle knob on the bottom when lifting or rotating the outrigger
 - Provides full torque control and safety of deployment at all times
- Robust, dual-detented lifting crank handle locks flush into base

MOUNT

- Ideal for boats 25' to 40'
- Constructed from cast stainless-steel and machined aluminum for a stronger, lighter base
- Each mount weighs 15 pounds (30 pounds per pair)
- Water-tight seal to prevent water leaks
- Safety detents prevent uncontrolled rotation when deploying outrigger poles
- Allows a controlled 180° rotation, if needed
- Locking head eliminates downward creep of outrigger poles
- Equipped to handle the torque and whip generated by poles up to 20'
- Includes all mounting hardware for easy installation
- Base hole pattern matches all TACO Marine Grand Slam models, as well as the industry standard hole patterns of other top-mount outrigger systems
- Backing plates (BP-150) sold separately



PRO SERIES

CHAMPION ANGLERS FISH TACO

Developed for serious sport fishing enthusiasts, the TACO Pro Series Mounts are heavy-duty and designed to handle the additional torque and whip generated by the longer outrigger poles.



GRAND SLAM 500

- Ideal for hardcore fishing boats from 32' to 50' plus
- Rotate and lift the outrigger from the safety of the deck
- Pairs with TACO's 20' and 24' Carbon Fiber Twist & Lock Tele-Outriggers
- Equipped with the Twist & Lock mechanism for one-handed, easy, fast and secure outrigger pole installation
- Eliminates need for pins or bolts to secure outrigger poles to bases
- Crank handle folds flush into base when locked



GRAND SLAM 400

- Ideal for boats up to 50'
- Uses 1-1/2" TACO 18' Deluxe Aluminum or 16' and 20' Carbon Fiber Tele-Outriggers with a locking pin
- Allows for horizontal rotation from under the T-top



GRAND SLAM 390

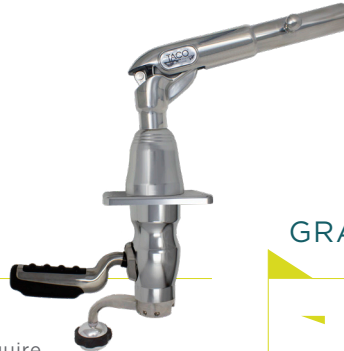
We took all the durable, dependable features of the popular GS-380 and incorporated a more robust gusset and thicker arm to withstand the torque and pressure created when using longer outrigger poles.

- Ideal for boats between 25' and 40'
- Safely control lift and rotation from under the top
- Offset handle for better hand clearance
- Pairs with 1-1/2" TACO 18' Deluxe Aluminum and 16', 20' and 24' Carbon Fiber Tele-Outriggers with locking pin
- Available as the GS-390XL with an elongated base for hardtops up to 4-1/2" thick



GRAND SLAM 390-180

- Same great features as the GS-390 but for hardtops that require a reversed handle orientation
- Available as the GS-390-180XL with an elongated base for hardtops up to 4-1/2" thick



GRAND SLAM 390BHC

- Same great features as the GS-390 but with a black hard coat anodized aluminum finish
- Pairs with TACO Deluxe Aluminum or Carbon Fiber Tele-Outriggers



BEST SELLER

GRAND SLAM 280

- Ideal for boats between 23' and 35'
- Safely control outward rotation from under the hardtop
- Pairs with 1-1/2" TACO 18' Deluxe Aluminum, 16' and 20' Carbon Fiber and 15' and 18' Aluminum Tele-Outriggers



GRAND SLAM 2801

- Same great features as the popular GS-280 but with an offset handle for better hand clearance





GRAND SLAM 170



- ▶ Ideal for boats 24' and under
- ▶ Sure-Grip knob allows lift every 18°
- ▶ Pairs with 1-1/8" TACO 15' Aluminum Tele-Outriggers

GRAND SLAM 170-2 CENTER RIGGER MOUNT



- ▶ Same great features as the GS-170 but available as a single unit Center Rigger
- ▶ Pairs with 1-1/8" TACO 8' and 12' Aluminum Center Rigger Pole

FIXED CLAMP-ON MOUNT FOR 1-1/8" CENTER RIGGER F16-0311C-1



- ▶ Installs to 3/4" and 1" schedule-40 pipe and 1-1/4" O.D. tube
- ▶ Polished, high-quality stainless steel



OPEN WATER INTERNAL & COLLAPSIBLE CARBON FIBER OUTRIGGER POLES

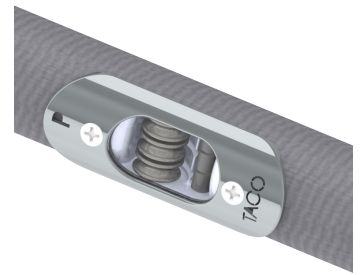
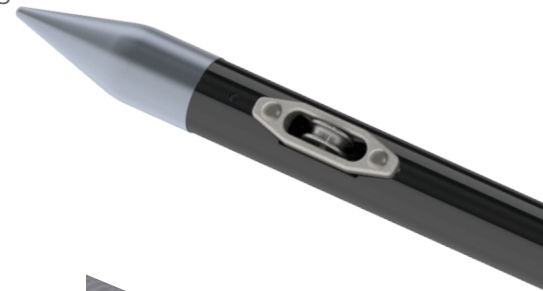
OI-3190CF, OI-3220CF

Introducing the all-new Open Water Internal & Collapsible Carbon Fiber Outrigger Poles for the ultimate in sport fishing. Unlike other internal, triple-rigged poles on the market that are fixed or challenging to setup and take down, these poles can be collapsed quickly and with ease for transportation and storage.

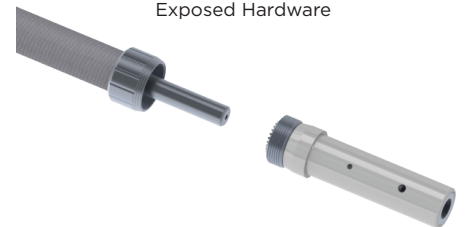
Our 3-piece design features a latching mechanism that provides a Twist & Lock connection between each pole segment – enabling easy and secure setup when heading offshore. Another innovative feature of these internally rigged poles is the ability to perfectly index the halyard line using the adjustable ratchet base/butt with a threaded locking collar – a unique feature that is only available from TACO Marine. This design element eliminates chafing and ensures the smooth ascent and descent of outrigger lines.

Additionally, each halyard line has its own internal tube running the length of the pole to its exit point that ensures smooth line operation with no tangling. Each pole is also labeled as port or starboard to simplify the installation process. Compatible with all standard 1-1/2" outrigger mounts, this pole comes internally rigged with premium 400-pound mono halyard line in three distinct colors for easy identification of use – eliminating exposed hardware. The new Open Water Internal & Collapsible Carbon Fiber Outrigger Poles ensure you have the best trolling setup when offshore, kite fishing, or maneuvering when docking.

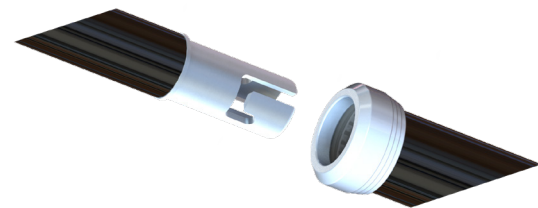
- Available in 19', 22' coming soon
- 3-section pole with our latching Twist & Lock mechanism connection
- Adjustable base/butt for perfect halyard, trolling alignment
- Internally rigged with 400-pound mono halyard line in three distinct colors
- Poles come labeled with port and starboard designations
- Poles can be removed and collapsed/folded for easy storage and transportation
- Pairs with all TACO outrigger mounts with standard 1-1/2" diameter pin-locking arm
- Compatible with other outrigger mounts on the market that accepts 1-1/2" diameter poles
- Shipping-friendly in 96" box



Internal Rollers Eliminate Exposed Hardware



Adjustable, Ratchet Base/Butt with Threaded-Locking Collar



Twist & Lock Latching Mechanism



Our TACO Marine Tele-Outriggers have revolutionized the center console fishing boat market. As the first aluminum outrigger to telescope down for storage, bridges and trailering, our Tele-Outrigger is far superior to the traditional outrigger. The Aluminum and Carbon Fiber Tele-Outriggers remain the outrigger of choice for serious and recreational sport anglers.

CARBON FIBER TELE-OUTRIGGERS OT-4200CF, OT-4240CF



- ▶ UV-resistant, clear-coated black carbon fiber
- ▶ By far, lighter and stronger than any aluminum pole on the market
- ▶ Patented stainless-steel Type-316L 360° swivel collars and rings
- ▶ Available in 16', 20' and 24'
- ▶ 24' telescopes to less than 9', and the 20' and 16' telescope to less than 8' for bridge clearance, trailering and storage
- ▶ Locking pin feature for secure placement
- ▶ 1-year limited warranty

CARBON FIBER TELE- OUTRIGGERS, TWIST & LOCK OT-4240CF-HD, OT-4200CF-HD



- ▶ Features Twist & Lock technology and pairs exclusively with the GS-500
- ▶ UV-resistant, clear-coated black carbon fiber
- ▶ By far, lighter and stronger than any aluminum pole on the market
- ▶ Patented, stainless-steel Type-316L 360° swivel collars and rings
- ▶ Available in 20' and 24'
- ▶ 24' telescopes to less than 9', and the 20' telescopes to less than 8' for bridge clearance, trailering and storage
- ▶ 1-year limited warranty

18' DELUXE ALUMINUM TELE-OUTRIGGERS OT-0318HD-VEL, OT-0318HD-BKA



- ▶ Features a thicker aluminum wall for enhanced durability
- ▶ Patented, stainless steel Type-316L 360° swivel collars and rings
- ▶ Pairs with all TACO GS-280, GS-390 and GS-400 series mounts
- ▶ Telescopes to less than 8' for bridge clearance, trailering and storage
- ▶ 3-year limited warranty

ALUMINUM TELE-OUTRIGGERS OT SERIES



- ▶ Available in four color combinations
- ▶ 1-1/8" diameter poles in 15' available and pairs exclusively with the TACO Striker Base (F16-0212) and the GS-170
- ▶ 1-1/2" diameter poles in 15' and 18' available and pairs exclusively with all GS-280, GS-390 and GS-400 series mounts and Striker Base (F16-0150)
- ▶ Telescopes to less than 6' for bridge clearance, trailering and storage
- ▶ Locking pin feature for secure placement
- ▶ 3-year limited warranty

ALUMINUM CENTER RIGGERS OC SERIES



- ▶ Same great features as the Aluminum Tele-Outriggers
- ▶ 1-1/8" diameter pole in 8' and 12' pairs with TACO Striker Base (F16-0311C) and the GS-170-2
- ▶ 3-year limited warranty

RIGGING KITS



Take the guesswork out of rigging Outrigger Poles. TACO Rigging Kits provide anglers with everything needed to successfully rig and go offshore.

PREMIUM SINGLE OR DOUBLE RIGGING KIT RK-0001PB, RK-0002PB



- Single or Double Roller Pulley Shock Cord with Stainless-steel Snap Hook and Eye Insert
- 1/8" thick, 100' or 200' Dacron Rigging Cord in Black
- Adjustable Tension Release Clip
- 1-1/4" Outrigger Line Ball Stops (single) 1-3/4"
- Outrigger Line Ball Stops (double)
- Pad Eye with Screws
- Double Sleeve Crimp
- Swivel
- Snap Swivel

PREMIUM TRIPLE BRAID RIGGING KIT RK-0003PB



- Ronstan Triple Roller Pulley Shock Cord with Stainless-Steel Snap Hook
- 1/8" thick, 300' Dacron Rigging Cord in Black
- Adjustable Tension Release Clips
- 1-3/4" Outrigger Line Ball Stops
- Stainless-Steel Eye Strap and Screws
- Double Sleeve Crimps
- Coastlock-style Swivels and Snap Swivels

STANDARD RIGGING KIT RK-0001SB



- Glass Ring with Brass Strap Clip
- 1/8" thick, 100' Dacron Rigging Cord in Black
- Adjustable Tension Release Clip 1 1/4"
- Outrigger Line Ball Stops
- Pad Eye with Screws
- Double Sleeve Crimp
- Swivel
- Snap Swivel

PREMIUM DOUBLE MONO RIGGING KIT RK-0002MP



- Double Roller Pulley Shock Cord with Stainless-Steel Snap Hook
- 1/8" thick, 180' coil of Lindgren Pitman
- 400# Monofilament in Black
- Adjustable Tension Release Clips
- 1-3/4" Outrigger Line Ball Stops
- Stainless-Steel Eye Strap and Screws
- Double Sleeve Crimps
- Coastlock-style Swivels and Snap Swivels

CENTER RIGGING KIT RK-0001PCB



- Single Roller Pulley Shock Cord with Stainless-Steel Snap Hook and Eye Insert
- 1/8" thick, 50' Dacron Rigging Cord in Black
- Adjustable Tension Release Clip
- 1-1/4" Outrigger Line Ball Stop
- Pad Eye with Screws
- Double Sleeve Crimp
- Swivel
- Snap Swivel

PREMIUM TRIPLE MONO RIGGING KIT RK-0003MP



- Ronstan Triple Roller Pulley Shock Cord with Stainless-Steel Snap Hook
- 1/8" thick, 180' coil of Lindgren Pitman 400# Monofilament in Black
- Adjustable Tension Release Clips
- 1-3/4" Outrigger Line Ball Stops
- Stainless-Steel Eye Strap and Screws
- Double Sleeve Crimps
- Coastlock-style Swivels and Snap Swivels

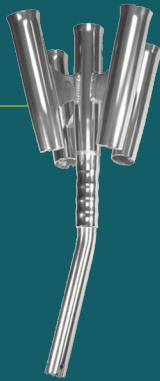
ROD HOLDER CLUSTERS

ONE LINE IS NEVER ENOUGH

When onboard rod storage is a premium, settle for nothing but the best with premium rod holder clusters from TACO Marine. Lightweight, heavy-duty, stowable, and easily maneuverable, these clusters are the perfect addition to any sport fishing arsenal.

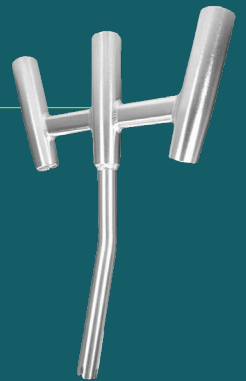
OLYMPIC ROD HOLDER CLUSTER F31-0790BXY-1

- ▶ Tightly groups five rods in one rod holder
- ▶ Fits into standard rod holders 1-5/8" in diameter
- ▶ Flared 9-3/4" rod holders for big game tackle
- ▶ Durable, welded, high-polished anodized aluminum construction
- ▶ I-Beam construction ensures rods are locked and properly spread out
- ▶ Solid gimbal design for additional strength
- ▶ Doubles as a convenient rigging or wash-down station
- ▶ Packaged in mesh bag for easy drying and to avoid scratching deck or storage surfaces



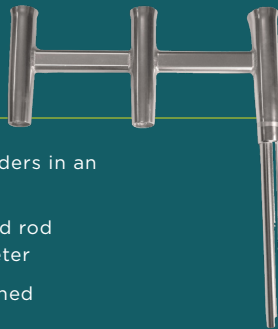
KITE FISHING ROD CLUSTER F31-0770BSA-1

- ▶ 15° bent shaft for clearance
- ▶ Fits into standard rod holders 1-5/8" in diameter
- ▶ Includes form-fitted, anti-fungal PVC white liner
- ▶ Solid gimbal design for additional strength
- ▶ Doubles as a convenient rigging or wash-down station
- ▶ Packaged in mesh bag for easy drying and to avoid scratching deck or storage surfaces



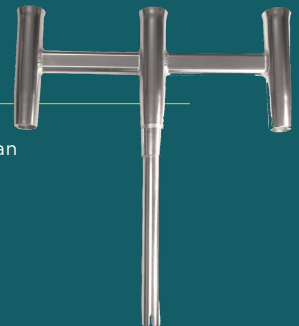
DELUXE TRIDENT ROD HOLDER CLUSTER, OFFSET F31-0781BXY-1

- ▶ Three, 9-3/4" flared rod holders in an offset trident design
- ▶ 1-1/2" shaft fits into standard rod holders with a 1-5/8" diameter
- ▶ Durable, welded, high-polished aluminum construction
- ▶ Eye strap attachment for safety lanyard and/or de-hooker placement
- ▶ Large 9-3/4" rod holders handle bigger and heavier rods and reels
- ▶ Packaged in mesh bag for easy drying and to avoid scratching deck or storage surfaces



DELUXE TRIDENT ROD HOLDER CLUSTER, STRAIGHT F31-0780BXY-1

- ▶ Three, 9-3/4" flared rod holders in a straight trident design
- ▶ 1-1/2" shaft fits into standard rod holders with a 1-5/8" diameter
- ▶ Durable, welded, high-polished aluminum construction
- ▶ Eye strap attachment for safety lanyard and/or de-hooker placement
- ▶ Large 9-3/4" rod holders handle bigger and heavier rods and reels
- ▶ Packaged in mesh bag for easy drying and to avoid scratching deck or storage surfaces



CLAMP-ON ADJUSTABLE ROD HOLDERS

F16-2600POL-1, F16-2623POL-1, F16-2630POL-1

Turn your boat into a strategic fishing machine and no longer worry about fabricating rod holders onto your T-top. The TACO Marine Type-316L Stainless Steel Clamp-On Adjustable Rod Holders allow you to place your combo at any location on your T-top or anywhere there is tubing on your boat. Multiple clamp sizes available depending on the outside diameter of your boat's pipe or tube.

- Manufactured from Type-316L stainless steel
- Rotates and lock every 18°
- Flared opening
- I-beam weld pin base
- One-rod holder fits most standard T-Top outer rings
- Easy, clamp-on installation in minutes
- Attractive and durable
- Includes form-fitted PVC white liner
- F16-2600POL-1 fits 7/8" to 1" tube
- F16-2623POL-1 fits 1-1/16" to 1-5/16" pipe and 1-1/4" tube
- F16-2630POL-1 fits 1-11/16" to 1-15/16" pipe
- Patent number US7309054
- 3-year limited warranty



ALUMINUM POLY ROD RACKS F31-3103BXZ-1, F31-3104BXZ-1

- 3- and 4-rod holder options
- Slotted to lock-in rods/reels
- Includes form-fitted PVC white liners
- Designed for light- to medium-tackle spinning rod/reel combos
- Convenient integrated slots for knife and plier
- Recessed fasteners
- Made in the USA
- 1-year limited warranty

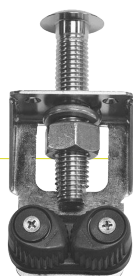


4-ROD TRANSOM MOUNT RACK F31-3504BSA-1

- Spline adjustment technology
- Adjustable to fit any boat's transom
- Long-lasting performance and appearance
- Maximizes onboard rod storage
- Includes form-fitted PVC white liners
- 3-year limited warranty



OUTRIGGER LINE TENSIONER F16-0204-1



- Mushroom head-threaded bolt
- Adjustable for boats with 1" to 2-1/2" thick gunnels
- Ronstan medium cam cleat for 1/8" to 1/4" thick rope
- Heavy-duty lock washer to prevent loosening from excess vibration
- Electro-polished bracket with countersunk mounting holes
- 1-year limited warranty

ADJUSTABLE POLY FILET TABLES P01-2120W, P01-2132W



- High-density, 1/2" thick Polyethylene
- Holds a knife and a plier
- Drainage openings for easy clean-up
- Anodized Aluminum mount fits into any standard gunnel rod holder
- Rugged engineered nylon tilt mount locks at many angles
- Folds flat for storage under deck
- Stainless fasteners and easy-to-assemble mount
- Available in 20" and 32" widths
- 3-year limited warranty

OUTRIGGER LINE CADDY F40-0030BKA-1



- Wrap excess line around caddies to keep halyards tidy
- Fits all TACO Marine outrigger poles
- For 1-1/2" poles, we recommend removing the rubber spacer
- Adjusts to desired distance depending of your needs
- Easy installation
- 1-year limited warranty

ROD HANGER RACKS

- Available to hold 2, 3 and 4 rods
- High-polished marine-grade stainless steel Type-316L
- Patented rod tip holder with spring-lock design locks rods in position
- Rod hangers feature concealed fasteners
- Durable, weather-resistant UV-stabilized white poly racks
- 3-year limited warranty





PATRICK

Explore our complete line of Sport
Fishing products on our website.

TACOMARINE.COM



[@tacomarine](https://www.facebook.com/tacomarine)



[@taco_marine](https://twitter.com/taco_marine)

[#TACOMARINE](https://www.instagram.com/tacomarine)